



September 8, 2022

## TRAFFIC UPDATE

Project ID: 4050-23-71  
Title: Fond du Lac – Chilton  
Limits: Drainage Way Culvert Replacement  
HWY: US 151  
County: Fond du Lac County

Construction on US 151 between Winnebago Park Road and Winnebago Heights Road is underway. The project consists of culvert pipe removals at four locations and concrete culvert replacements. The culvert pipes are displaying significant rusting and deterioration. Please see enclosed map for specific work zone locations.

### Schedule

Work has begun as of August 1, 2022, with a 35- working day contract.

### Traffic Impacts

US 151 will be closed and detoured for the duration of the project. The detour route will use County W and County Q. A detour route map is enclosed with this letter. Access will be maintained to properties and businesses in the work zone.

**Due to severe storms over the weekend the work zone switch is anticipated to take place September 15, 2022. The work zone will move south of Highland Park Road. Residents living north of Highland Park Road will have access from the North.**

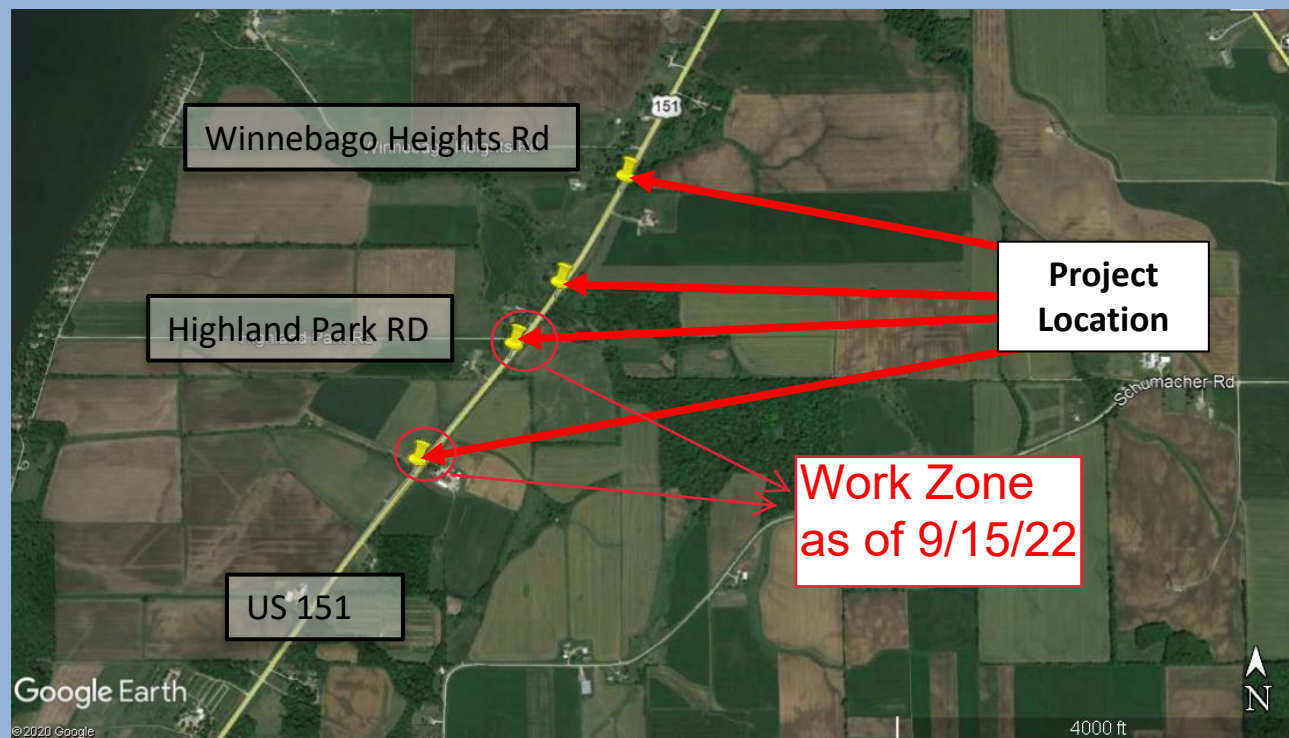
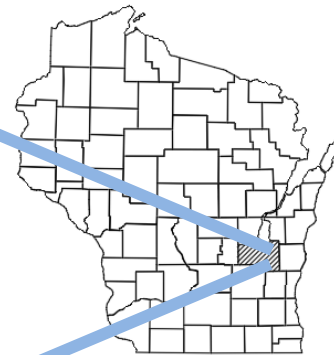
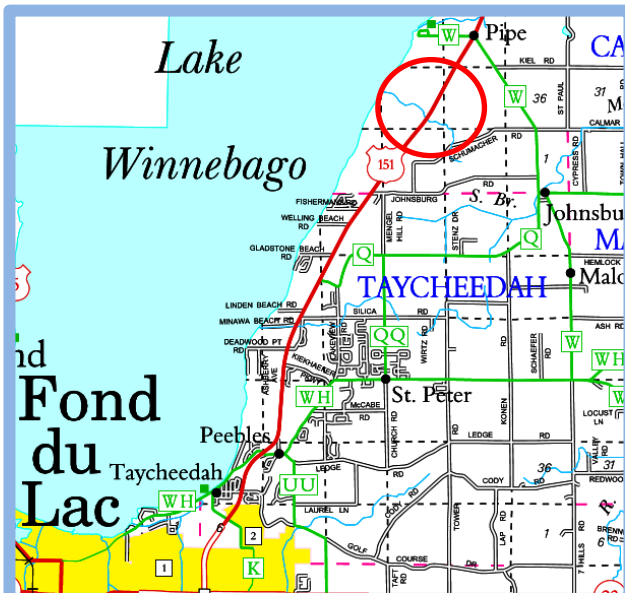
For more information regarding the US 151 project, please visit the construction project website at <https://projects.511wi.gov/us151drain/>.

If you have any questions or concerns, contact Erich Masiarchin at (920) 309-0923 or via email at [erich.masiarchin@cedarcorp.com](mailto:erich.masiarchin@cedarcorp.com).

Sincerely,

A handwritten signature in black ink that reads "Kimberly A. Slezak, P.E.".

Kimberly Slezak P.E.  
WisDOT Construction Project Manager  
(920) 492-4131



Location Map  
4050-23-00  
Fond du Lac-Chilton  
US 151  
Fond du Lac County

# Detour Map

